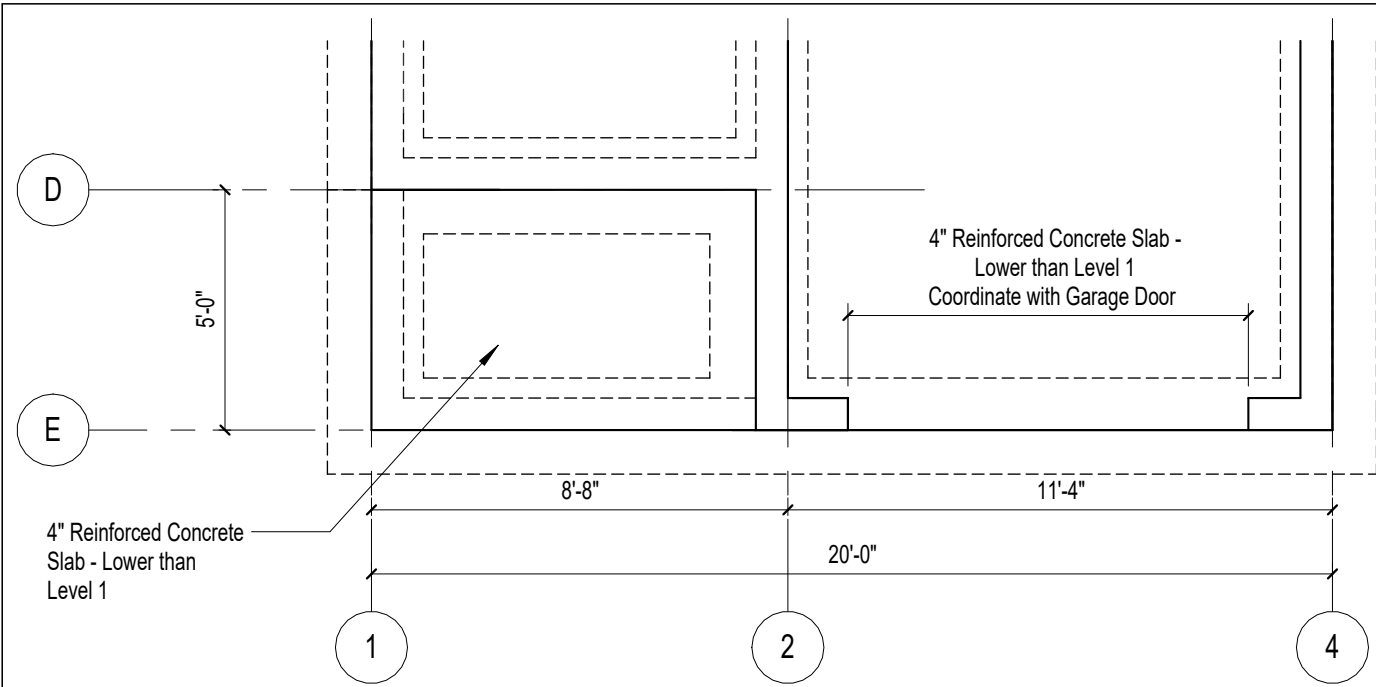
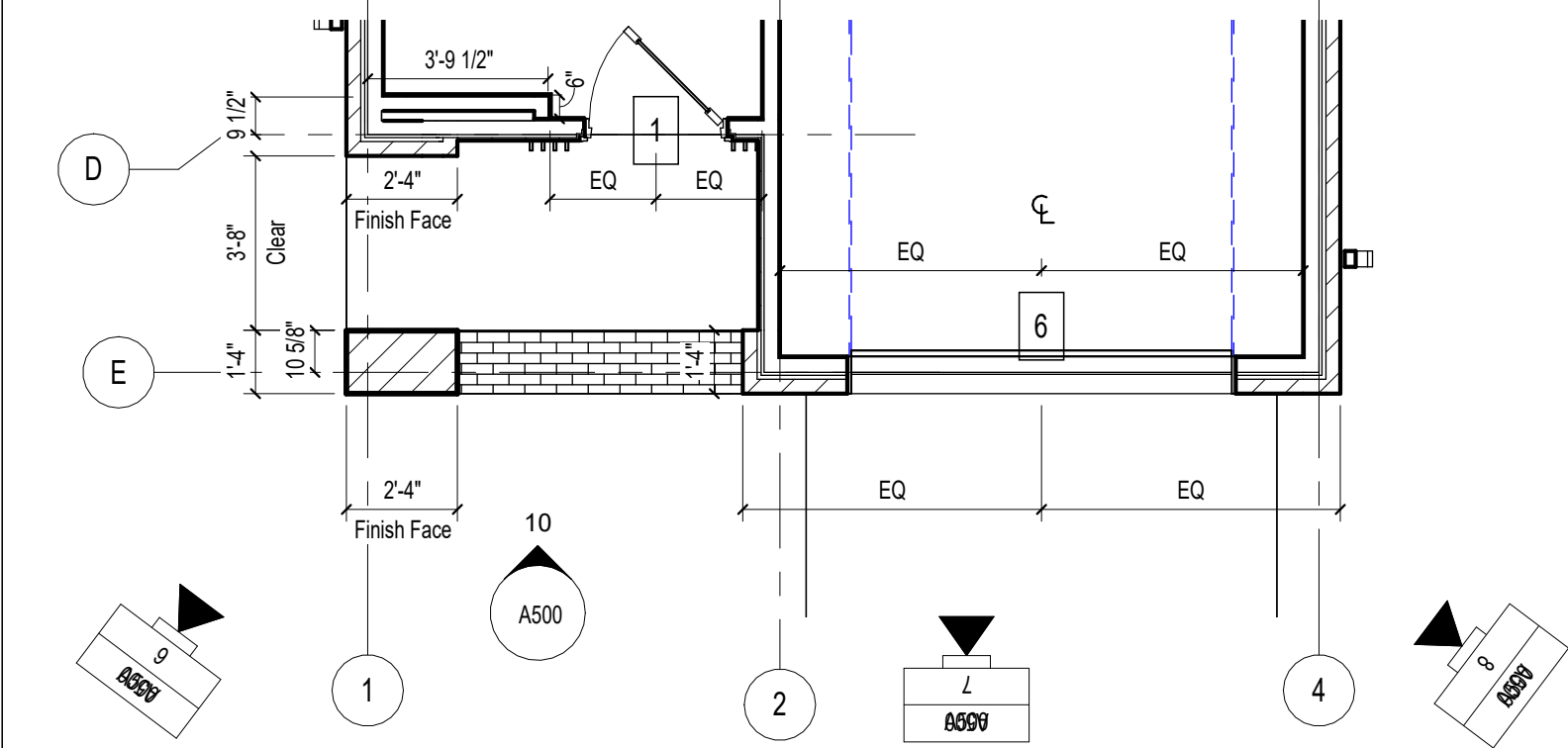


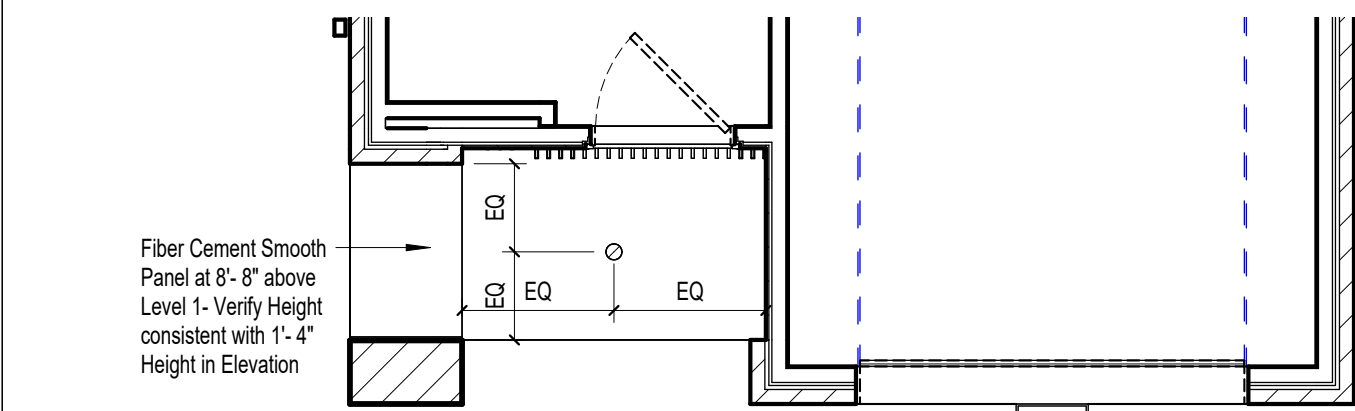
2/15/2023 1:24:20 PM



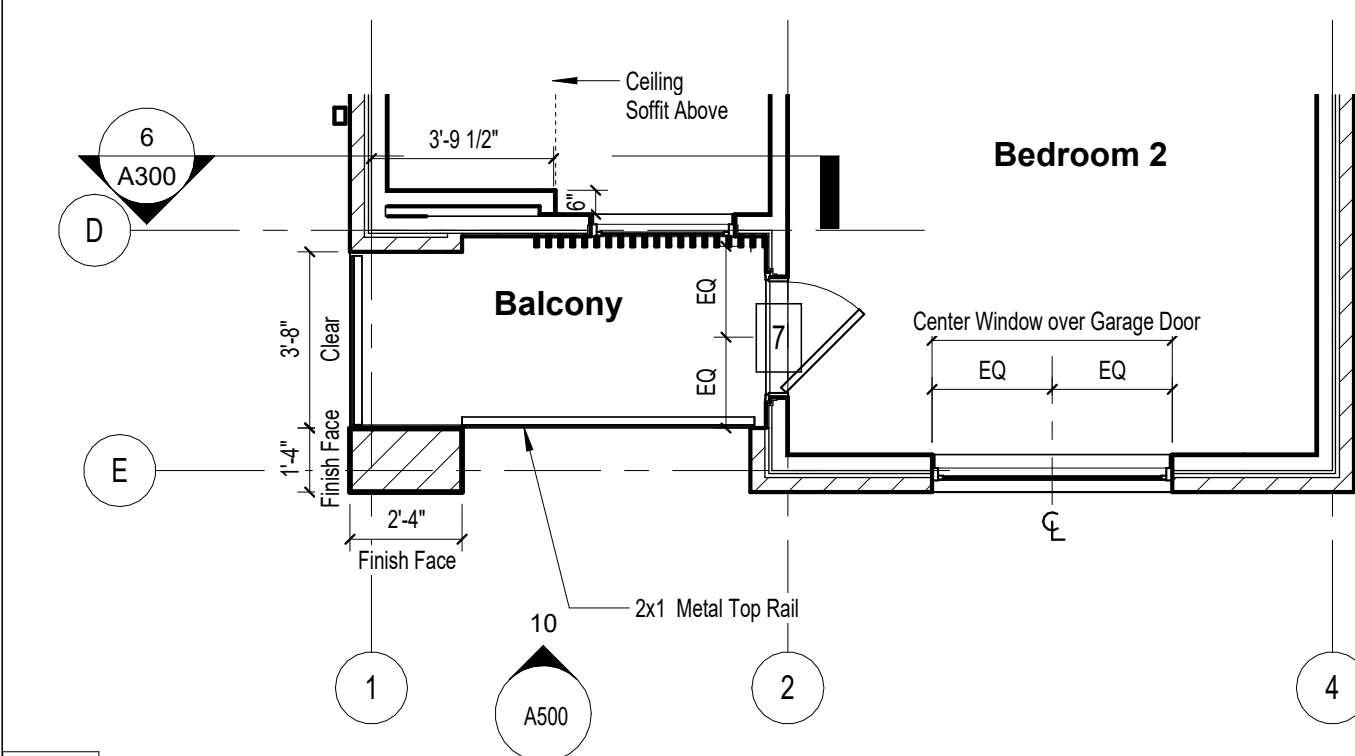
1 Foundation Plan - Type C
1/4" = 1'-0"



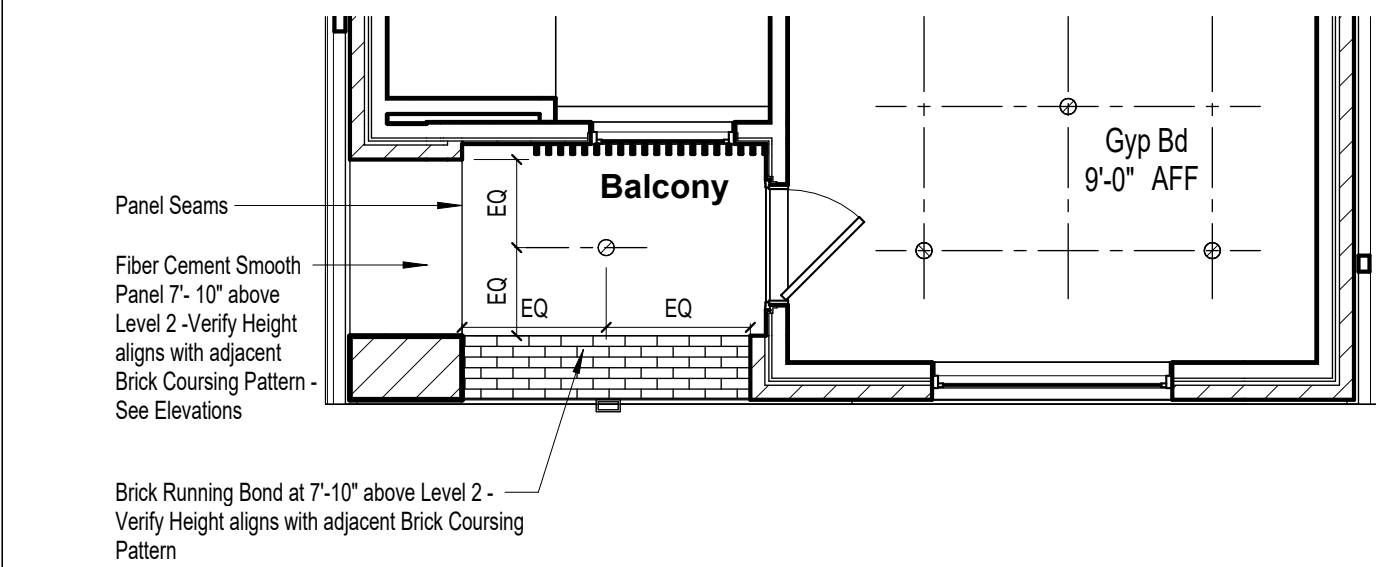
2 Floor Plan - Level 1 - Type C
1/4" = 1'-0"



3 Level 1 - Reflected Ceiling Plan - Type C
1/4" = 1'-0"



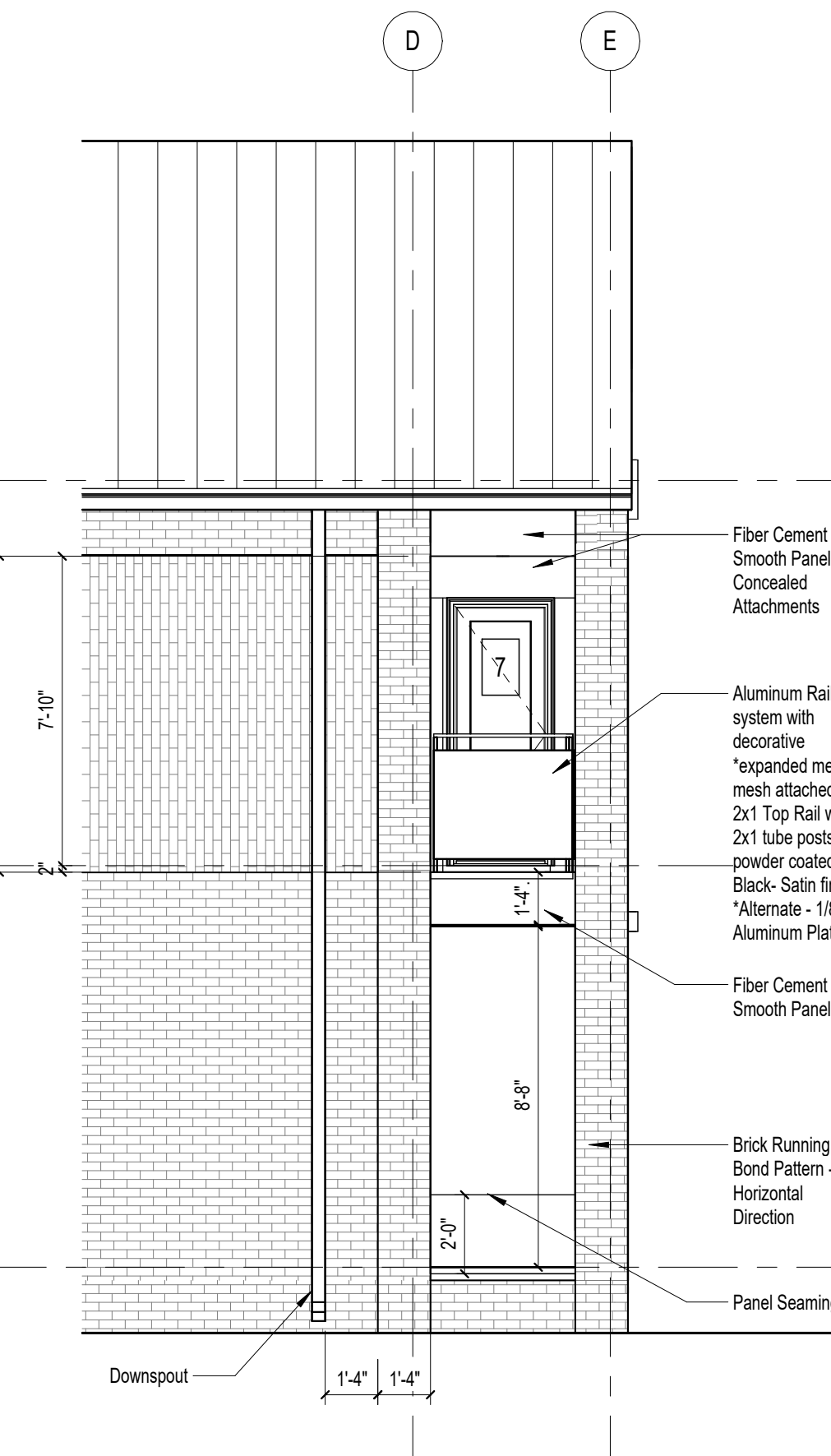
4 Floor Plan - Level 2 - Type C
1/4" = 1'-0"



5 Level 2 - Reflected Ceiling Plan - Type C
1/4" = 1'-0"



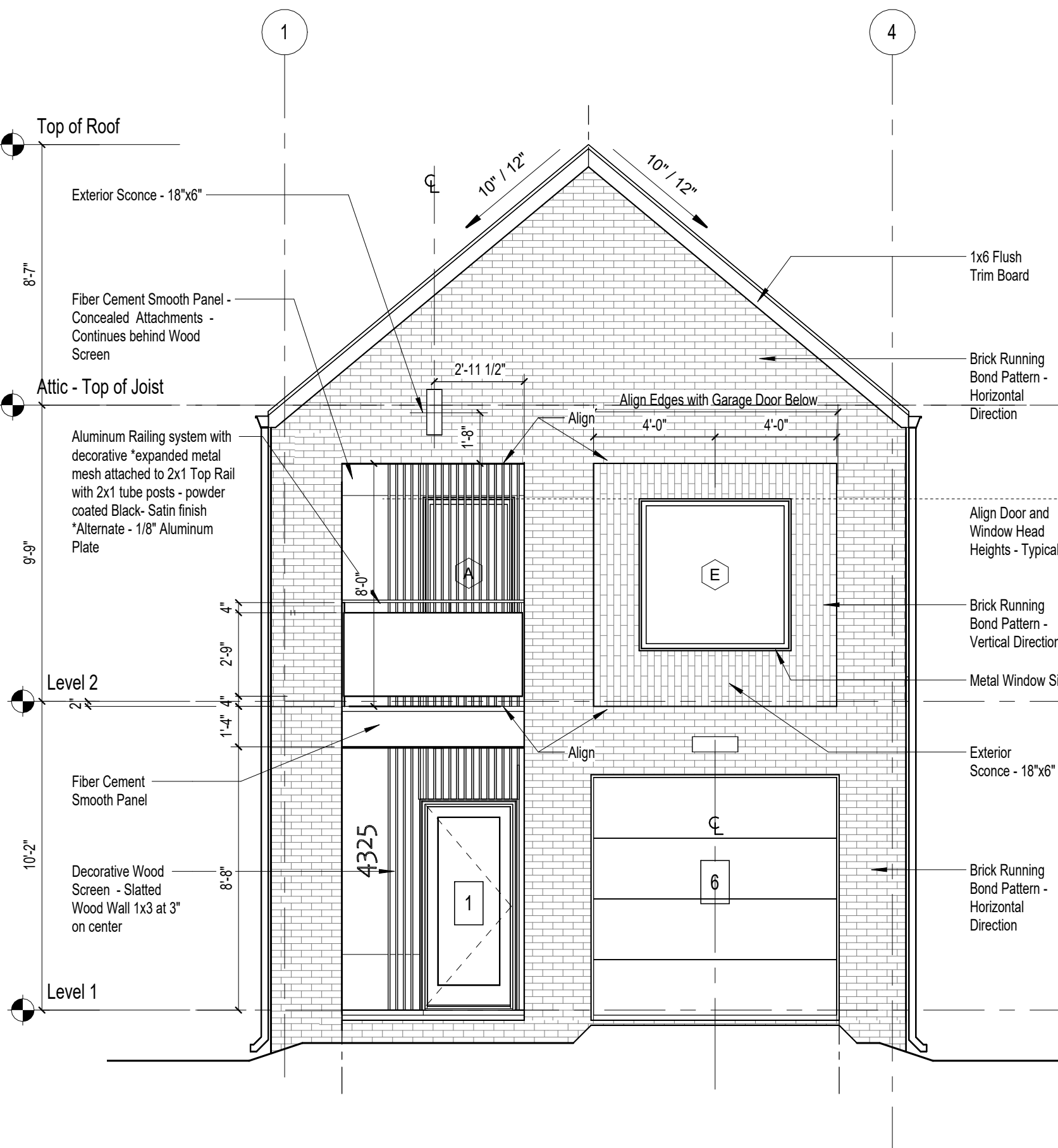
6 Perspective - Left Type C



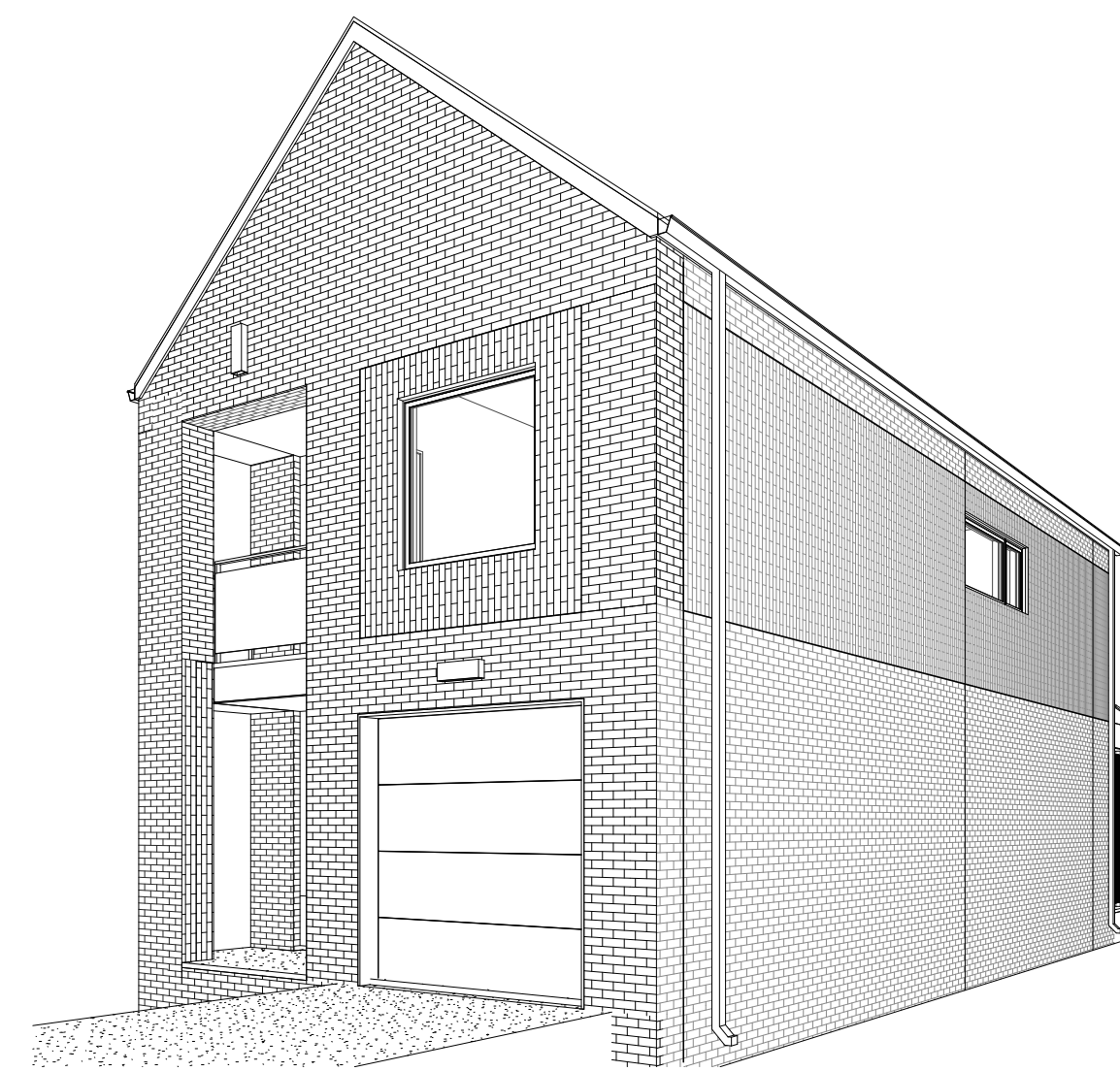
9 Elevation - Left
1/4" = 1'-0"



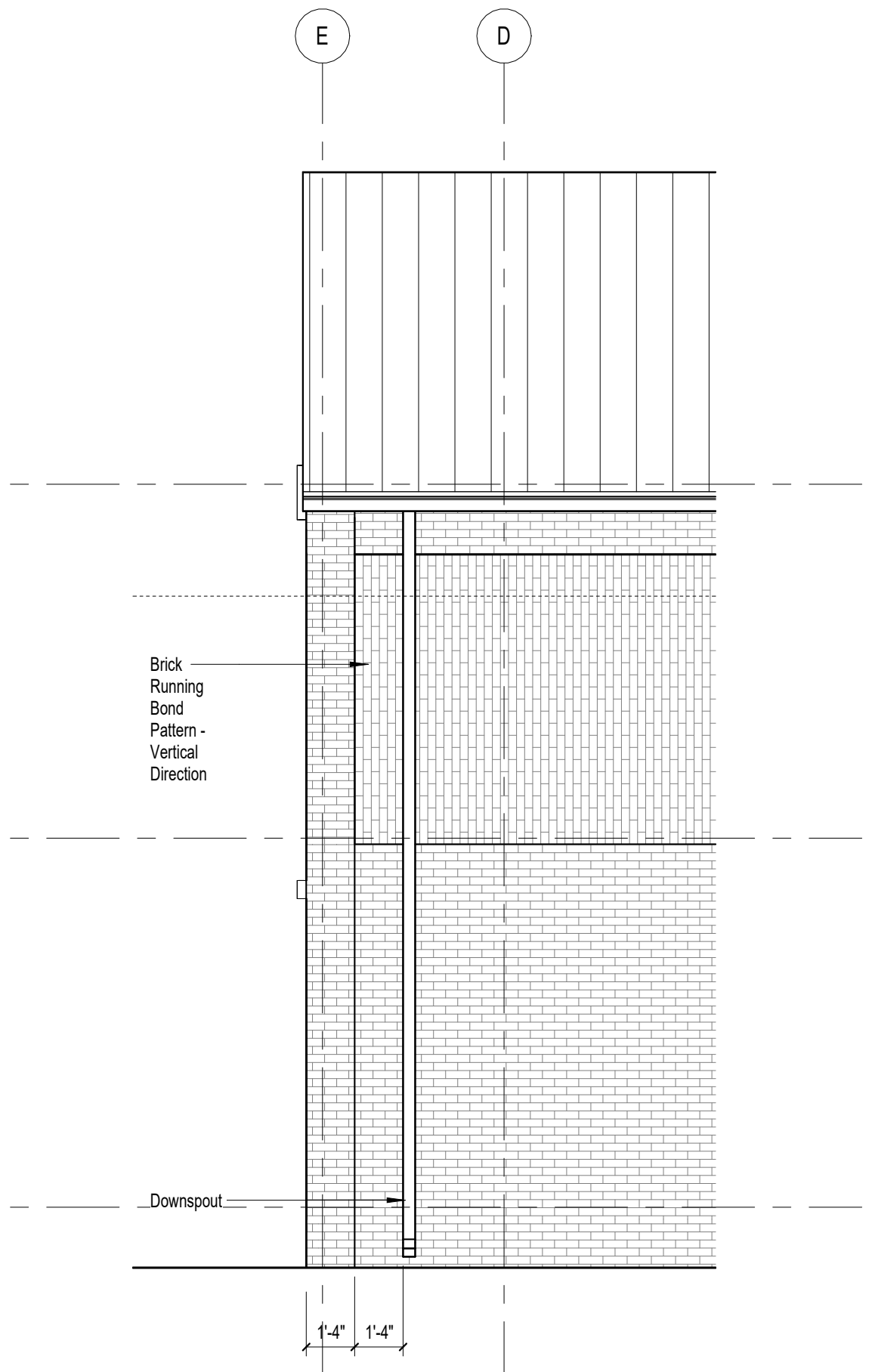
7 Perspective - Front Type C



10 Elevation - Front
1/4" = 1'-0"



8 Perspective - Right Type C



11 Elevation - Right
1/4" = 1'-0"

Susan Collette Design

Memphis, Tennessee 38103
901.292.0266

General Notes

- These drawings indicate in general, the project in terms of architectural design intent. The drawings do not indicate or describe all work required.
- The Contractor is responsible for providing all items required for the proper execution and completion of the work including the structural, mechanical, electrical, and plumbing systems design, coordination and execution.
- All work should comply with local jurisdiction building codes.
- Contractor to verify all dimensions prior to construction.
- Do not scale the drawings.
- Finish top of Slab at Level 1, unless noted otherwise.

NO.	REVISIONS	DATE

REVISIONS

PROJECT NAME:

R Street - Type C

R Street
Little Rock, Arkansas 72205

ORIGINAL ISSUE DATE:
01/29/23

SHEET TITLE:

Type C

SHEET NO.:

A500

LATEST REVISION NO.: